

HARDWOOD

ARGONNE FOREST OAK

Engineered



1070 Renaissance

ARGONNE FOREST OAK

HARDWOOD

	US Units	Metric Units
Style Number	SA419	
Construction	Engineered	
Species	White Oak	
Nominal Overall Thickness	9/16"	14 mm
Nominal Width	7.48"	189.99 mm
Maximum Length	Random lengths up to 74.8"	Random lengths up to 189.99 cm
Finish	UV Aluminum Oxide	
Gloss Level	7%	
Surface Texture	Wirebrushed	
Edge Description	Micro Bevel	
End Description	Mb	
Profile	Tongue And Groove	
Weight per Carton	59.54 lbs	27 kg
SQFT per Carton	31.09 sq ft	2.88 sq m
SQFT per Pallet	1243.6 sq ft	115.53 sq m
Installation Methods	Nail, Staple, Glue, Floating	
Installation Grade	Above, On, Below	
Variation	High	
GREENGUARD® Certified	Yes	
Cradle-to-Cradle Certified	Yes	
Radiant Heat Approved	Yes	
Residential Warranty	50 Years	
Commercial Warranty	5 Year Commercial	
Installation	Engineered Hardwood Flooring Installation Guidelines	
Maintenance	Hardwood Maintenance Guidelines	
All measurements are nominal.	Cartons may include random lengths.	

Features

The Argonne Forest collection has an abundance of the natural charm that makes wood floors so desirable. Creating its stunning character are stylish 7 1/2" widths, extremely handsome linear graining, and sawn face veneers that closely resemble solid hardwood. Argonne Forest's colors are visually rich - with the beautiful knots, mineral streaks, and natural splits seen in heirloom woods. Heightening its appeal is a very low-gloss finish, which calls to mind vintage European oil-rubbed floors.

Suggested Adhesive

Style Name	Style Number
35MC	HS105

Trim Pieces length: 78" (*Overlap Reducer and Overlap Stairnose are designed for floating installations only. These items are non-stocking - but are available through a quick-ship program. Delivery should take approximately 2 to 3 weeks.)



SRH12
Flush Reducer



SORH2
*Overlap Reducer



SSH12
Flush Stairnose



SOSH2
*Overlap Stairnose



SCH12
Threshold / Carpet Reducer



TMH78
T-Molding



QTR96
Quarter Round

Trim images are for illustration purposes only. Actual dimensions will vary. Contact the Shaw Information Center for additional details: 800-441-7429.

ARGONNE FOREST OAK

HARDWOOD

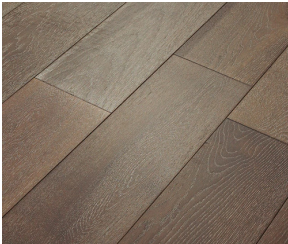
Colors



146 Tapestry



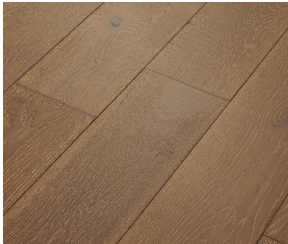
508 Armory



514 Drawbridge



533 Arrow



986 Trestle



1010 Chatelaine



1070 Renaissance



1075 Knight



1111 Nobility



2047 Dynasty



5031 Baroque



7100 Estate