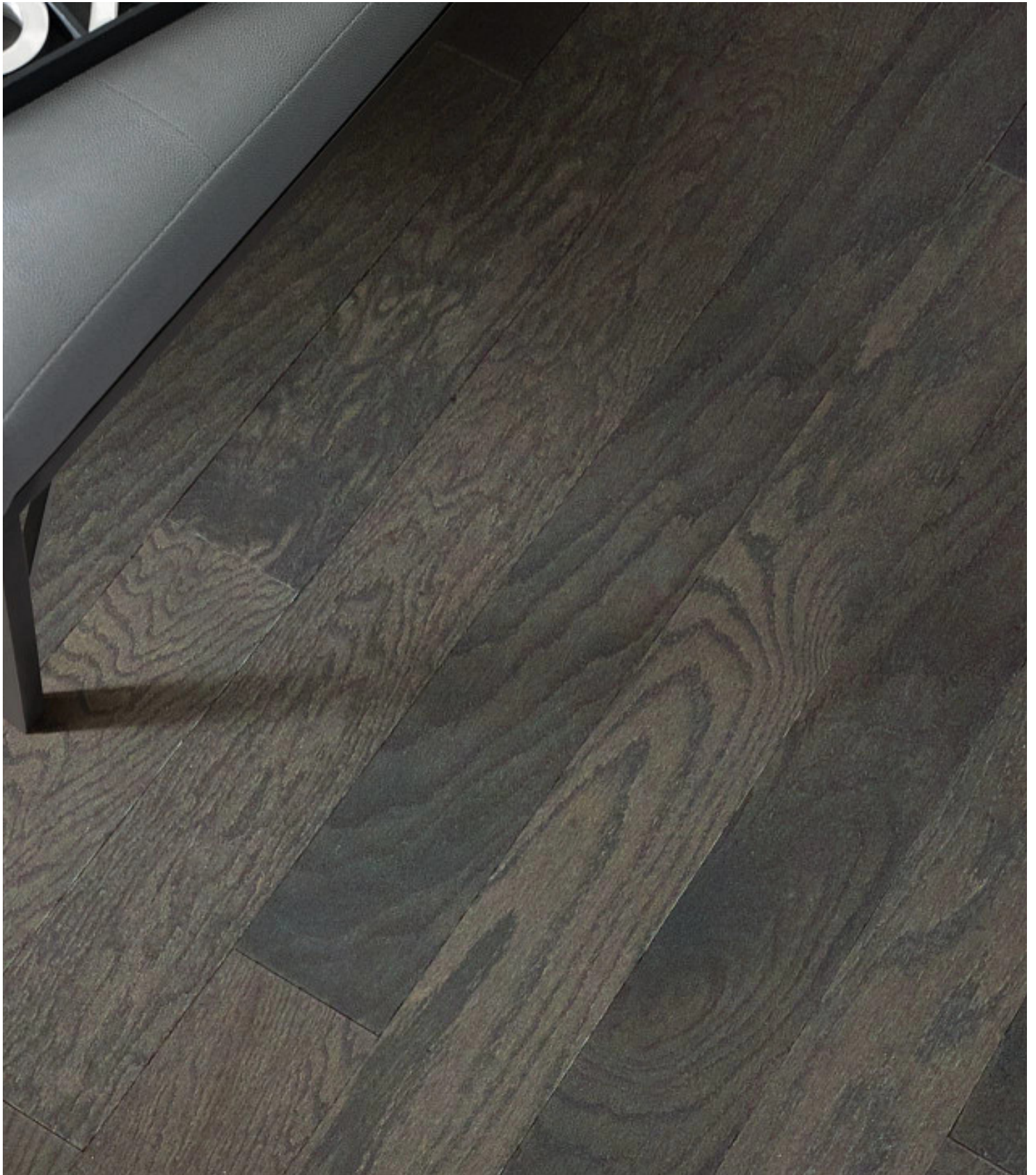




# ECLECTIC OAK

Engineered



9027 Urban

# ECLECTIC OAK



	US Units	Metric Units
<b>Style Number</b>	<b>SW696</b>	
<b>Construction</b>	Engineered	
<b>Species</b>	Red Oak	
<b>Nominal Overall Thickness</b>	1/2"	11.81 mm
<b>Nominal Width</b>	4.94"	125.48 mm
<b>Maximum Length</b>	Random lengths up to 58.56"	Random lengths up to 148.74 cm
<b>Finish</b>	Repel - Water Resist	
<b>Gloss Level</b>	7%	
<b>Surface Texture</b>	Smooth	
<b>Edge Description</b>	Micro Bevel	
<b>End Description</b>	Mb	
<b>Profile</b>	Tongue And Groove	
<b>Weight per Carton</b>	36 lbs	16.32 kg
<b>SQFT per Carton</b>	19.72 sq ft	1.83 sq m
<b>SQFT per Pallet</b>	1025.44 sq ft	95.26 sq m
<b>Installation Methods</b>	Nail, Staple, Glue, Floating	
<b>Installation Grade</b>	Above, On, Below	
<b>Variation</b>	High	
<b>GREENGUARD® Certified</b>	Yes	
<b>Cradle-to-Cradle Certified</b>	Yes	
<b>Radiant Heat Approved</b>	Yes	
<b>Residential Warranty</b>	Repel Hardwood 50 Year	
<b>Commercial Warranty</b>	5 Years	
<b>Installation</b>	<a href="#">Repel Water Resistant Hardwood Flooring Installation Guidelines</a>	
<b>Maintenance</b>	<a href="#">Hardwood Maintenance Guidelines</a>	
All measurements are nominal.	Cartons may include random lengths.	

## Features

Eclectic Oak by Shaw Floors features the distinctive graining and detail of red oak hardwood. Pillowed edges and ends give each plank a more pronounced sculpted effect, which enhances the versatile vintage look.



MADE IN THE USA

# ECLECTIC OAK



## Colors



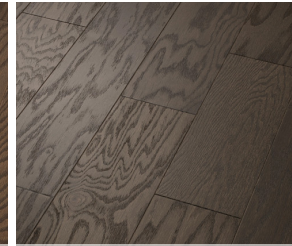
1039 Modern



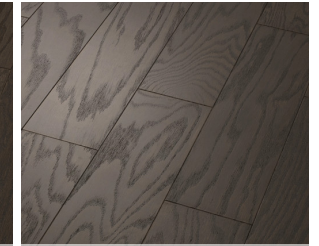
2028 Art Deco



7039 Industrial



7045 Skyscraper



9027 Urban