

# CARPET

**Kick Off**  
Soft Surface - Shaw Floors

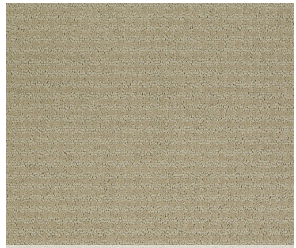


510 Cold Water

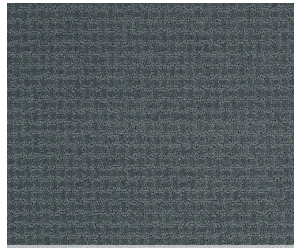
	US Units	Metric Units
<b>Style Number</b>	<b>EA501</b>	
<b>Product Type</b>	Soft Surface - Shaw Floors	
<b>Collection</b>	Sfa	
<b>Description</b>	Pattern	
<b>Fiber</b>	100% ANSO® BCF Nylon	
<b>Dye Method</b>	Continuous Dyed	
<b>Primary Backing</b>	Synthetic	
<b>Secondary Backing</b>	ClassicBac®	
<b>Product Size</b>	12 ft	3.66 m
<b>Face Weight</b>	25 oz/yd <sup>2</sup>	847.6 g/m <sup>2</sup>
<b>Finished Pile Thickness</b>	0.37 in	9.4 mm
<b>Gauge</b>	1/8 in	31.5 per 10 cm
<b>Tufts</b>	11.0 per in	43 per 10 cm
<b>Density</b>	2374 oz/yd <sup>3</sup>	0.088 g/cm <sup>3</sup>
<b>Twist Information</b>	5.0	
<b>Number of Colors</b>	15	
<b>Pattern Repeat</b>	1.25 in W X 1 in L	3.18 cm W X 2.54 cm L
<b>Pill Test</b>	Pass	
<b>FHA Data UM44D</b>		
<b>Certification Number</b>	52247	
<b>Type</b>	I	
<b>Class</b>	1	
<b>Texture</b>	B	
<b>Durability Rating</b>	3.50	
<b>Total Recycled Content</b>	0% (Pre-Consumer 0%   Post-Consumer 0%)	
<b>Warranty</b>	<a href="#">ANSO® Nylon Fiber Residential Warranty Program</a>	
<b>Maintenance</b>	<a href="#">Carpet Care &amp; Maintenance Guide</a>	
<b>Environmental</b>	<a href="#">Environmental Product Declaration (EPD)</a> <a href="#">CRI® Green Label Plus (GLP8878)</a>	

## Colors

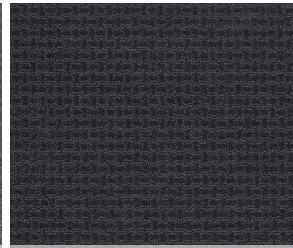




111 Wool Skein



410 Azure



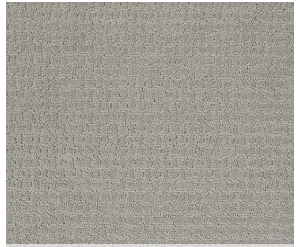
411 Indigo



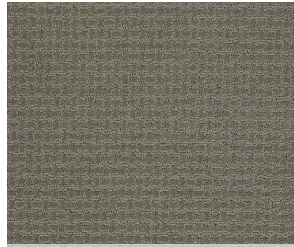
510 Cold Water



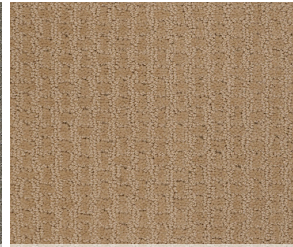
511 Gray Flannel



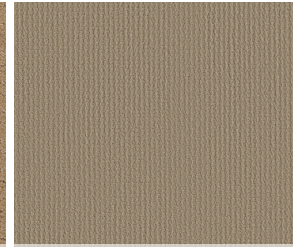
512 Sea Salt



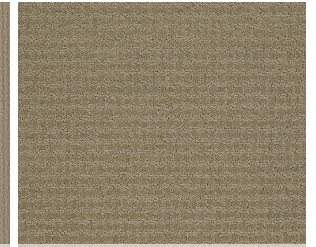
513 Pewter



701 Natural Wood



703 Mushroom



710 Prairie

