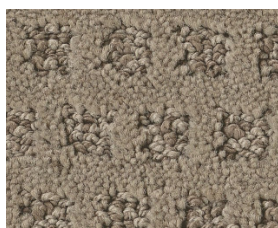


Specifications

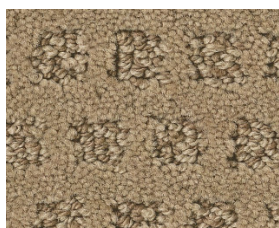
Style Number	CCP10
Construction	Pattern
Fiber Content	100% ANSO® Nylon
Weight	43.9 Oz/Yd ² 1488.5 G/M ²
Total Recycled Content	0% (Pre-Consumer 0% Post-Consumer 0%)
Pile Thickness	0.45 In 11.43 Mm
Colors	23
Backing	SoftBac® Platinum
Width	12 Ft
Pattern Repeat	1 In W X 1.88 In L 2.54 Cm W X 4.76 Cm L
Dye Method	Continuous Dyed
Par Rating	3.50
Pill Test	Pass
Sustainability	Environmental Product Declaration (EPD) CRI® Green Label Plus (GLP8878)
Warranties	Shaw 20 Year Warranty With Stairs

Product image for illustration purposes only. Actual product will vary.

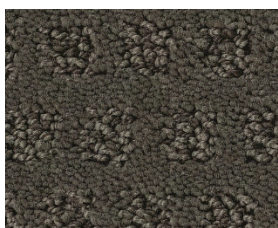
Test Reports may be included or listed by the manufacturing/inventory style number as opposed to the noted selling style number.



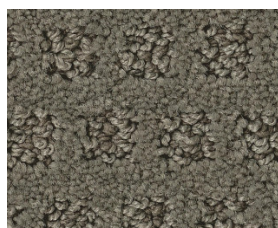
00750
Dundee



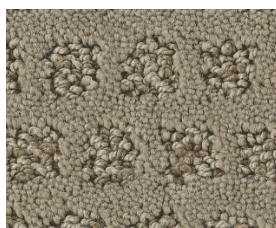
00751
Carnoustie



00752
Glacier Park



00753
Essex



00754
Missoula

Product image for illustration purposes only. Actual product will vary.