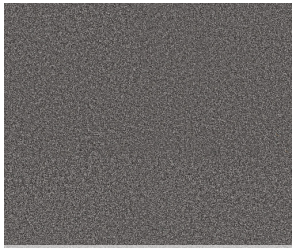


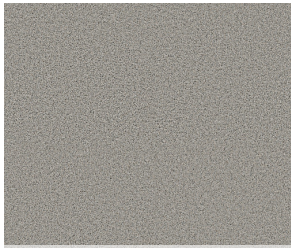
	US Units	Metric Units
Style Number	5E672	
Product Type	Soft Surface - Shaw Floors	
Collection	Pet Perfect Plus	
Description	Texture	
Fiber	100% ANSO® High Performance Solution Dyed PET	
Dye Method	Predyed	
Primary Backing	Polypropylene	
Secondary Backing	LifeGuard® Spill-Proof Technology®	
Product Size	12 ft	3.66 m
Face Weight	58.5 oz/yd ²	1983.5 g/m ²
Finished Pile Thickness	0.83 in	21.08 mm
Gauge	5/32 in	25.2 per 10 cm
Tufts	12.0 per in	47 per 10 cm
Density	2537 oz/yd ³	0.094 g/cm ³
Twist Information	5.68	
Number of Colors	16	
Pill Test	Pass	
Durability Rating	4.50	
Total Recycled Content	27.81% (Pre-Consumer 0% Post-Consumer 27.81%)	
Warranty	Pet Perfect Plus 25 Year Limited Residential Broadloom Carpet Warranty	
Maintenance	Carpet Care & Maintenance Guide	
Environmental	Environmental Product Declaration (EPD) CRI® Green Label Plus (GLP9970)	

Colors

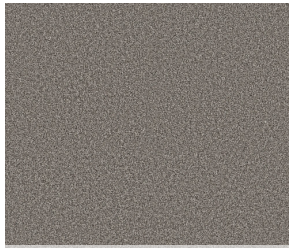




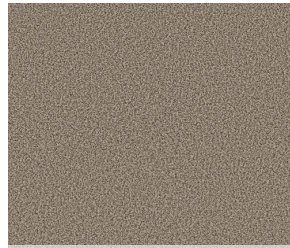
512 River Rock



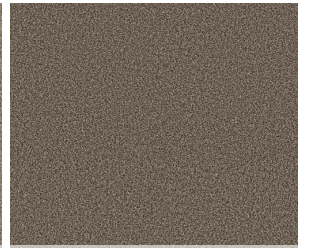
518 Thin Ice



519 Cityscape



700 Khaki



715 Fence Post



716 Mineral Bed

