

# CARPET

# The Fair

Soft Surface - Shaw Floors

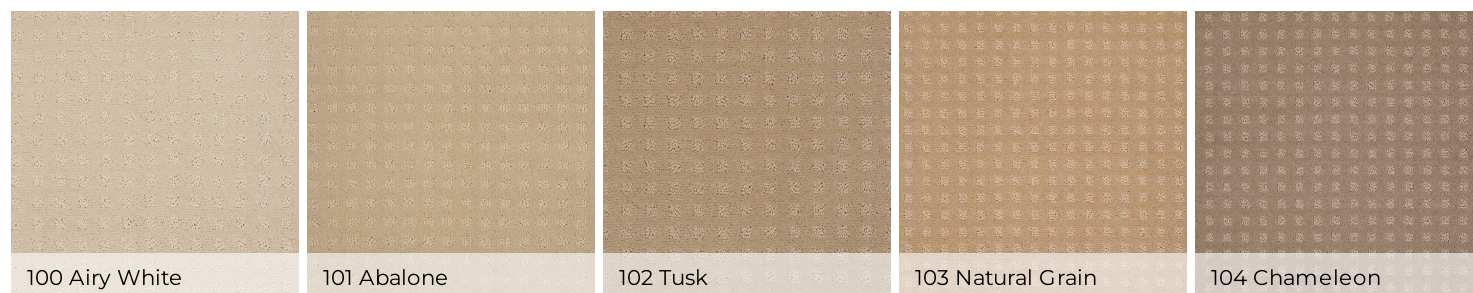


741 Honey Pot

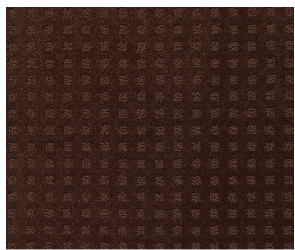
	US Units	Metric Units
<b>Style Number</b>	<b>EA023</b>	
<b>Product Type</b>	Soft Surface - Shaw Floors	
<b>Collection</b>	Sfa	
<b>Description</b>	Pattern	
<b>Fiber</b>	100% ANSO® BCF Nylon	
<b>Dye Method</b>	Continuous Dyed	
<b>Primary Backing</b>	Polypropylene	
<b>Secondary Backing</b>	SoftBac® Platinum	
<b>Product Size</b>	12 ft	3.66 m
<b>Face Weight</b>	34.1 oz/yd <sup>2</sup>	1156.2 g/m <sup>2</sup>
<b>Finished Pile Thickness</b>	0.43 in	10.92 mm
<b>Gauge</b>	1/8 in	31.5 per 10 cm
<b>Tufts</b>	11.7 per in	46 per 10 cm
<b>Density</b>	2847 oz/yd <sup>3</sup>	0.105 g/cm <sup>3</sup>
<b>Twist Information</b>	5.0	
<b>Number of Colors</b>	36	
<b>Pattern Repeat</b>	1 in W X 1 in L	2.54 cm W X 2.54 cm L
<b>Pill Test</b>	Pass	
<b>FHA Data UM44D</b>		
<b>Certification Number</b>	<a href="#">52334</a>	
<b>Type</b>	I	
<b>Class</b>	1&2	
<b>Texture</b>	B	
<b>Durability Rating</b>	3.25	
<b>Total Recycled Content</b>	0% (Pre-Consumer 0%   Post-Consumer 0%)	
<b>Warranty</b>	<a href="#">ANSO® Nylon Fiber Residential Warranty Program</a>	
<b>Maintenance</b>	<a href="#">Carpet Care &amp; Maintenance Guide</a>	
<b>Environmental</b>	<a href="#">Environmental Product Declaration (EPD)</a> <a href="#">CRI® Green Label Plus (GLP8878)</a>	

Test Reports may be included or listed by the manufacturing/inventory style number as opposed to the noted selling style number.

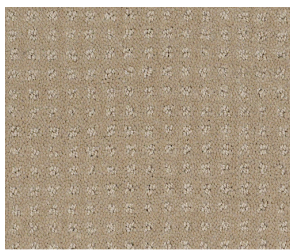
## Colors



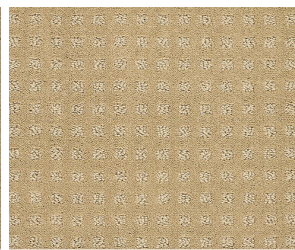
				
130 Ice Cream	133 Soft Sun	135 Cabana	140 Moonlight	142 Honeycomb
				
150 Thunder Cloud	151 Antique Lace	200 Butter Cream	201 Wheat	202 Gold Coin
				
300 Aloe	301 Kelly	400 Clear Water	401 Tropic Surf	500 Grey Dove
				
501 Stainless	502 Steel Beam	550 Platinum Mist**	600 Aged Copper	701 Field Stone
				
702 Pebble Creek	703 Perfect Beige	704 Driftwood	705 Townhouse Taupe	706 Mocha Chip



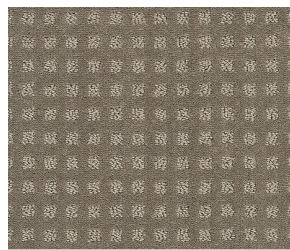
707 Tree Bark



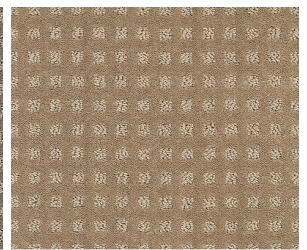
733 Sandstone



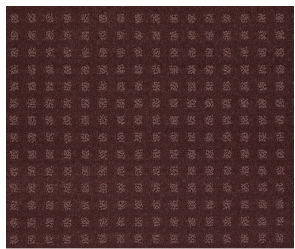
741 Honey Pot



751 Soft Clay



756 Toffee



900 Wisteria

