

PUREGRAIN

ENDURE

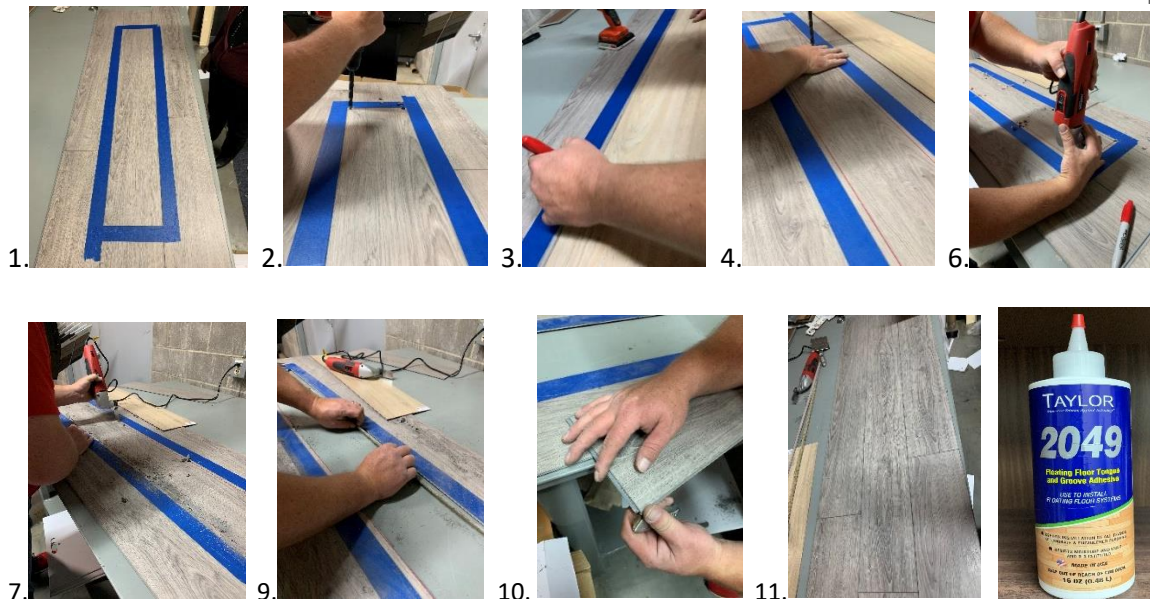
Replacing a Damaged Plank

Only applies to New Standard Plus, New Standard II, Lifestyle, Timeless Beauty, Pietra, and Preference

Please see the instructions below to replace a damaged board in the middle of an installation.

1. Place non-marking tape on the adjacent planks around the perimeter of the plank to be removed, so that while removing the plank you don't damage the adjacent planks
2. Measure a ½ inch from each side at the corners and make a mark. Drill a ½ inch hole at each mark.
3. With a pencil, draw a straight line around the perimeter connecting the inside of the holes. This line will guide you when you are cutting out the plank.
4. Take an oscillating or circular saw and adjust the depth of the saw to the same thickness as the plank. This will ensure you don't damage the sub-floor.
5. Start cutting the center of the plank and use the lines as a guide.
6. Continue cutting until you reach the holes on all the corners.
7. Now all you have to do is lift out the center piece. Pry it out with the help of a utility knife.
8. Carefully remove the remaining parts of the plank by gently moving them back and forth and up and down. One end joint will come out with very little effort. The other end will require more care to make sure you don't damage the existing plank. Make sure all the pieces of the damaged plank have been removed. Make sure the area is clean.
9. Now get the same sized plank as a replacement. You need to shave the lip of the groove on the long and short sides. You also need to cut off the tongue at a slight angle on the long and short sides of the plank to get it to fit into the opening you have made. Depending on the plank, it may be necessary to remove part of the groove to allow you to work the replacement piece into position without damaging the existing planks.
10. Apply a small bead of WF Taylor 2049 Tongue and Groove Adhesive, or similar adhesive, to the grooves of the existing planks and the grooves of the replacement plank. Carefully work the plank into place. Clean any adhesive residue with water and a damp cloth.

NC 12/5/18



For additional assistance please contact Engineered Floors Technical Services at hstechservice@engineeredfloors.com or 1-866-706-9745 Opt 7